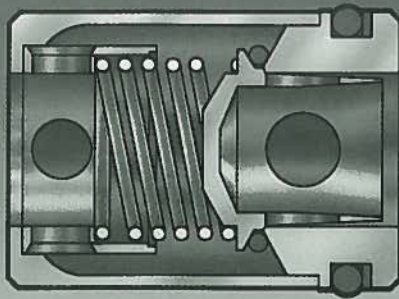


C200 SERIES

0 to 5,000 PSIG



CARTRIDGE CHECK VALVES

Features

- Quick Opening / Positive Closing
- Zero Leakage
- Compact
- Easily Installed

Technical Data

Materials of Construction

Body – 2024-T4/T351 Aluminum
6061-T6/T651 Aluminum
303 Stainless Steel
316 Stainless Steel

Finish – Aluminum - Chromic Anodized
Steel - Black Oxide

O-Rings – Buna N, Teflon® or Viton®

Spring – 302 or 304 Stainless Steel

Pressure Ratings

Operating Pressure – 0 to 5,000 PSIG (345 BAR)

Proof Pressure – 0 to 7,500 PSIG (517 BAR)

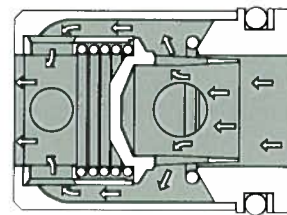
Burst Pressure – Over 15,000 PSIG (1,034 BAR)

Temperature Range

-100°F to +400°F; -73°C to +204°C

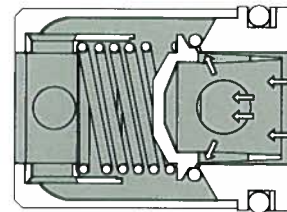
Based On O-Ring Material, See Page 2

How It Works



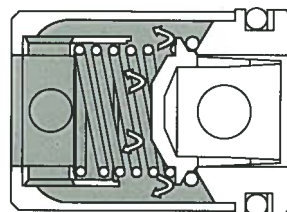
OPEN

Full flow passages offer minimum restriction to flow. Spring is completely removed from flow path.



CLOSING

Floating O-ring automatically establishes line contact with conical metal surfaces of poppet and seat to cushion closing and insure perfect sealing.



CLOSED

O-ring only seals. Full pressure load is carried by metal to metal seat. Increasing pressure increases sealing efficiency – metal seat prevents any possibility of deformation or extrusion of O-ring.



CIRCLE SEAL CONTROLS, INC.

A division of CIRCOR International, Inc.

Certified to ISO 9001

C200 SERIES

0 to 5,000 PSIG

How To Order

C 2 20 S - 1Q - 5

BASIC MODEL NUMBER ————— C 2 20 S

C200 Series

O-RING MATERIAL, TEMPERATURE & CRACKING PRESSURE RANGES*

49 - Buna N	-40°F to 250°F	2.0 - 4.0 PSI
59 - Buna N	-40°F to 250°F	0.5 - 1.0 PSI
20 - Teflon®	-100°F to 400°F	8 PSI Max.
32 - Viton®	-20°F to 400°F	0.5 - 1.0 PSI

CRACKING PRESSURE
Call Out Dash Number if Not Standard
5 - 5 PSIG*

VALVE SIZE
See Below

BODY MATERIAL

- A - 2024-T4/T351 Aluminum
- A1 - 6061-T6/T651 Aluminum
- S - Steel
- T - 303 Stainless Steel
- T1 - 316 Stainless Steel

Notes:
Vacuum service may require special lubricants.
LEAKAGE — From Zero Pressure to Max. Operating Pressure - Zero.
Exception: O-Rings of Teflon® when used with gases – 5cc/min. Max. at zero to 50 psi; 0.5cc min. Max. above 50 psi.
Teflon® and Viton® are registered trademarks of DuPont.

Please consult your Circle Seal Controls Representative or our factory for information on operating pressures and temperature ranges.

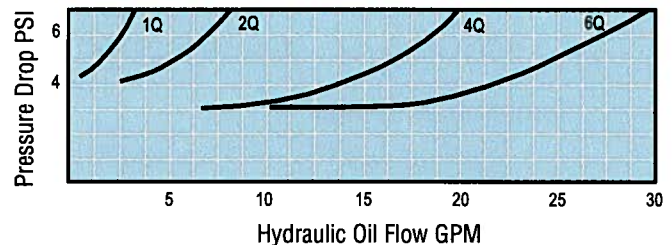
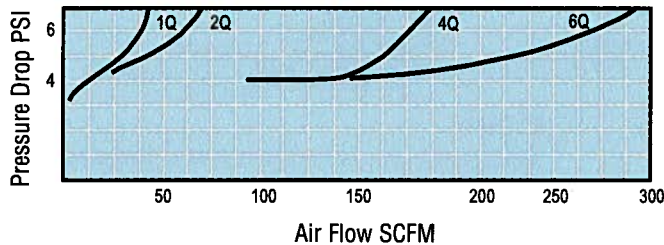
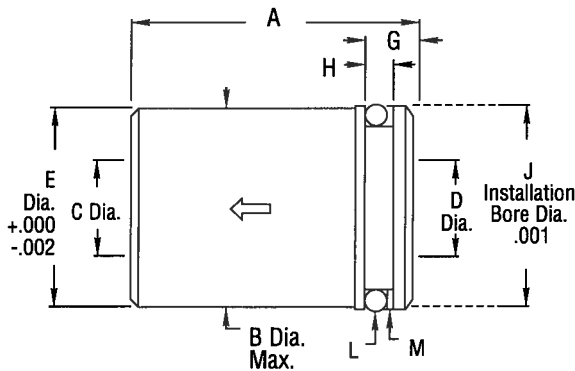
Specifications, Dimensions, Weights & Typical Flow Curves

SPECIFICATIONS , WEIGHTS & CV RATINGS

Model Number	L (O-Ring)	M (Backup Ring)	Weight In Lbs.		C _v
	AS 568	MS 28774	Alum.	S.S.	
1Q	-113	-113	.05	.14	1.71
2Q	-210	-210	.09	.26	3.03
4Q	-217	-217	.24	.69	7.38
6Q	-220	-220	.37	1.06	11.40

DIMENSIONS

Model Number	A	B	C	D	E	G	H	J
1Q	1.13	.746	.34	.34	.748	.245	.170	.750
2Q	1.38	.996	.43	.45	.998	.298	.208	1.000
4Q	1.90	1.432	.72	.73	1.435	.306	.208	1.437
6Q	2.16	1.621	.92	.91	1.623	.380	.208	1.625



CIRCLE SEAL CONTROLS, INC.

A division of CIRCOR International, Inc.

Certified to ISO 9001

2301 WARDLOW CIRCLE • P.O. BOX 3300 • CORONA, CALIFORNIA 92878 • TEL: (909) 270-6200 • FAX: (909) 270-6201

CSC-487-L • 7/99